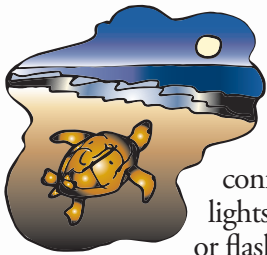


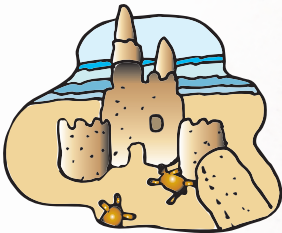
Sea Turtles Like Their Beaches

Dark, Flat & Clean

Hutchinson Island is an important nesting area for sea turtles. Nesting season runs from March 1 to October 31 on the Atlantic coast. You can help sea turtles when they are nesting or hatching by following these suggestions. Together, we can make it easier for sea turtles to get to and from the ocean safely.



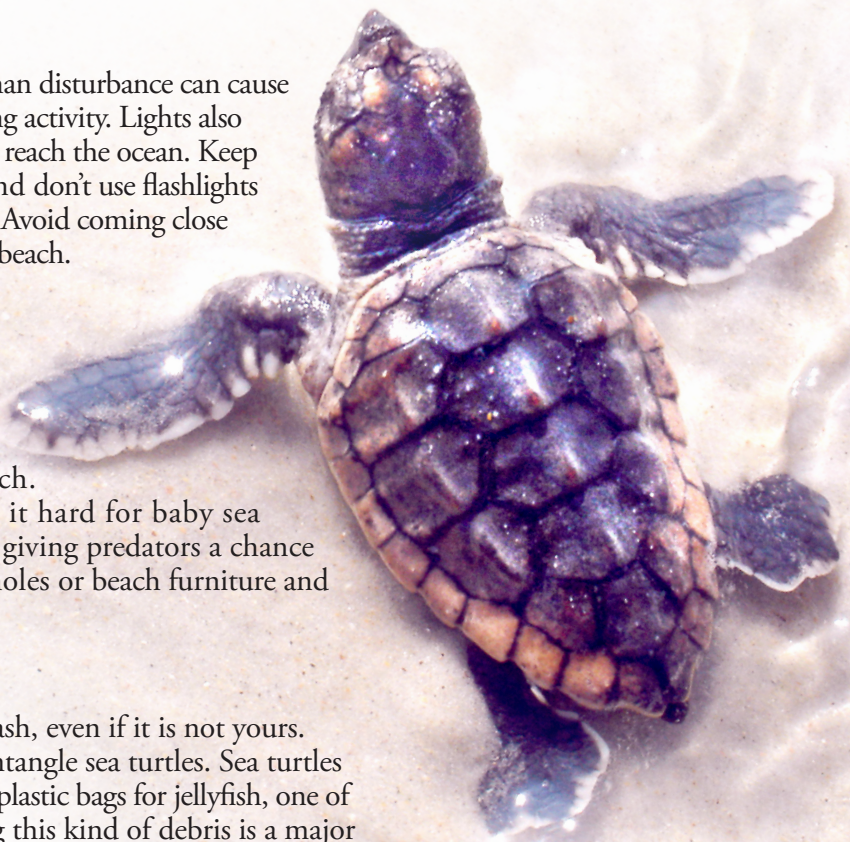
Dark: Light and human disturbance can cause sea turtles to abandon nesting activity. Lights also confuse baby sea turtles trying to reach the ocean. Keep lights off at night, close blinds and don't use flashlights or flash photography on the beach. Avoid coming close to sea turtles you encounter on the beach.



Flat: Fill in holes. Knock over sandcastles. Don't leave beach chairs or other items on the beach. Obstructions can make it hard for baby sea turtles to reach the ocean, giving predators a chance to attack. Adult sea turtles can get trapped in holes or beach furniture and become injured or exhausted.



Clean: Pick up ALL trash, even if it is not yours. Fishing line and nets can entangle sea turtles. Sea turtles can mistake balloons and plastic bags for jellyfish, one of their favorite foods. Eating this kind of debris is a major cause of death in sea turtles.



If you see nesting sea turtles or hatchlings on the beach, do not approach or disturb them.

Report stranded or dead sea turtles, hatchlings in danger, or someone disturbing a turtle or its nest. Call the Florida Fish and Wildlife Conservation Commission (FWC) at 1-888-404-3922 or *FWC from your cell phone.



Learn more by visiting the Florida Oceanographic Coastal Center.
890 NE Ocean Blvd., Stuart Florida 34996
(772) 225-0505 www.FloridaOcean.org