

Weekly Water Quality Report

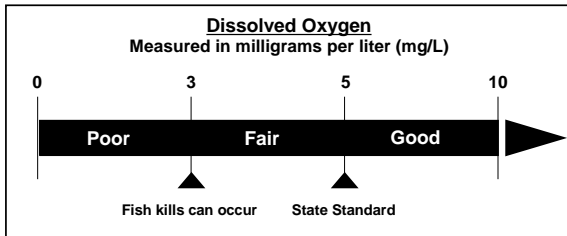
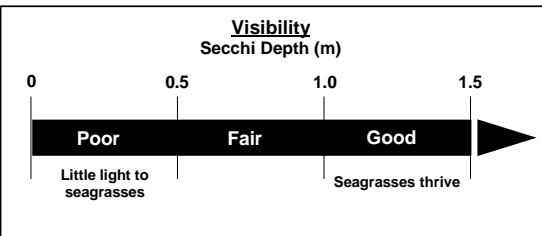
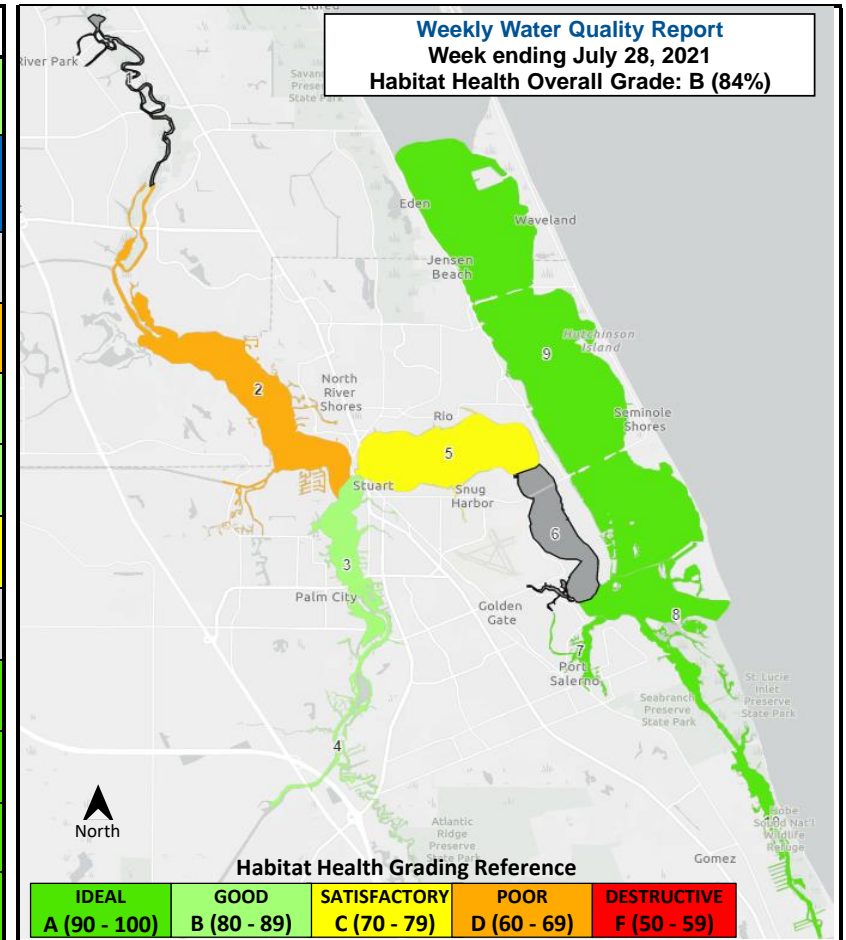
Data on water quality to assess habitat health in the St. Lucie Estuary and southern Indian River Lagoon is collected and provided by the Florida Oceanographic Society's Water Quality Understanding Estuary System Trends (WaterQUEST) program. For more information, past reports, or to support our water quality monitoring, visit www.floridaocean.org/water-quality



WATERQUEST
 WATER QUALITY UNDERSTANDING ESTUARY SYSTEM TRENDS
 FLORIDA OCEANOGRAPHIC SOCIETY

Reporting Week: July 22 2021 to July 28 2021

HABITAT HEALTH OVERALL GRADE		SCORE 84%		GRADE B		STATUS GOOD		
Zone	Location	# of Reports	Water Temp. (°C)	pH	Secchi Visibility (m)	Salinity (ppt)	Dissolved Oxygen (mg/L)	Score Grade Status
1	Winding North Fork	0			Data	Not	Available	
2	North Fork	3	27	7.6	0.7 Fair	4 Poor	4.0 Fair	61% D Poor
3	South Fork	4	30	7.9	0.7 Fair	8 Good	4.7 Fair	81% B Good
4	Winding South Fork	2	32	7.6	0.6 Fair	4 Good	5.6 Good	87% B Good
5	Wide Middle River	4	31	7.9	0.7 Fair	15 Fair	4.3 Fair	71% C Satisfactory
6	Narrow Middle River	0			Data	Not	Available	
7	Manatee Pocket	2	32	8.1	1.3 Good	29 Good	4.6 Fair	92% A Ideal
8	Inlet Area	3	30	8.3	1.6 Good	34 Good	5.6 Good	97% A Ideal
9	Indian River Lagoon	5	28	8.0	1.2 Good	32 Good	4.5 Fair	92% A Ideal
10	Intracoastal Waterway South	3	31	7.8	1.5 Good	34 Good	3.9 Fair	92% A Ideal



Salinity
 Measured in parts per thousand (ppt)

Zone	Poor	Fair	Good
1 & 4	< 1 or > 15	1 - 2 or 8 - 15	2 - 8
2 & 3	< 10	10 - 15 or > 25	15 - 25
5	< 15	15 - 20	> 20
6	< 20	20 - 25	> 25
7	< 20	20 - 27.5	> 27.5
8, 9, & 10	< 25	25 - 30	> 30

Disclaimer: The data above indicates changes in water quality parameters to evaluate habitat health. This map is not to be used to indicate current bacteria levels, nutrient levels, or the presence of harmful algae blooms. For up to date information on bacteria levels, visit the Florida Health Beaches Program (<http://www.floridahealth.gov/environmental-health/beach-water-quality/>). For up to date information on nutrients levels, visit ORCA Kilroy (<http://api.kilroydata.org/public/>) or HBOI LOBO (<http://fau.loboviz.com/>). For up to date information about algae blooms, visit the Florida DEP's algae bloom dashboard (<https://floridadep.gov/algabloom/>).