

# Weekly Water Quality Report

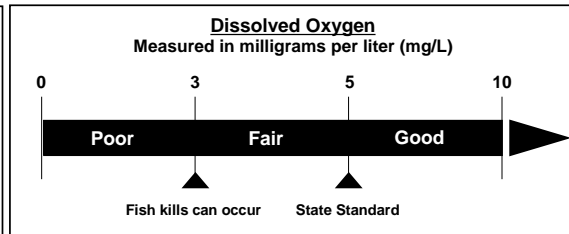
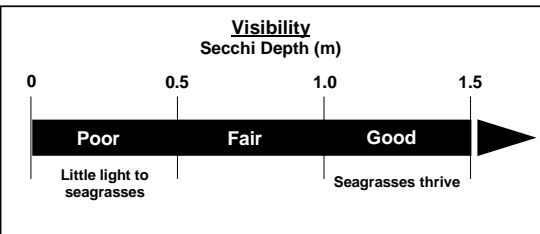
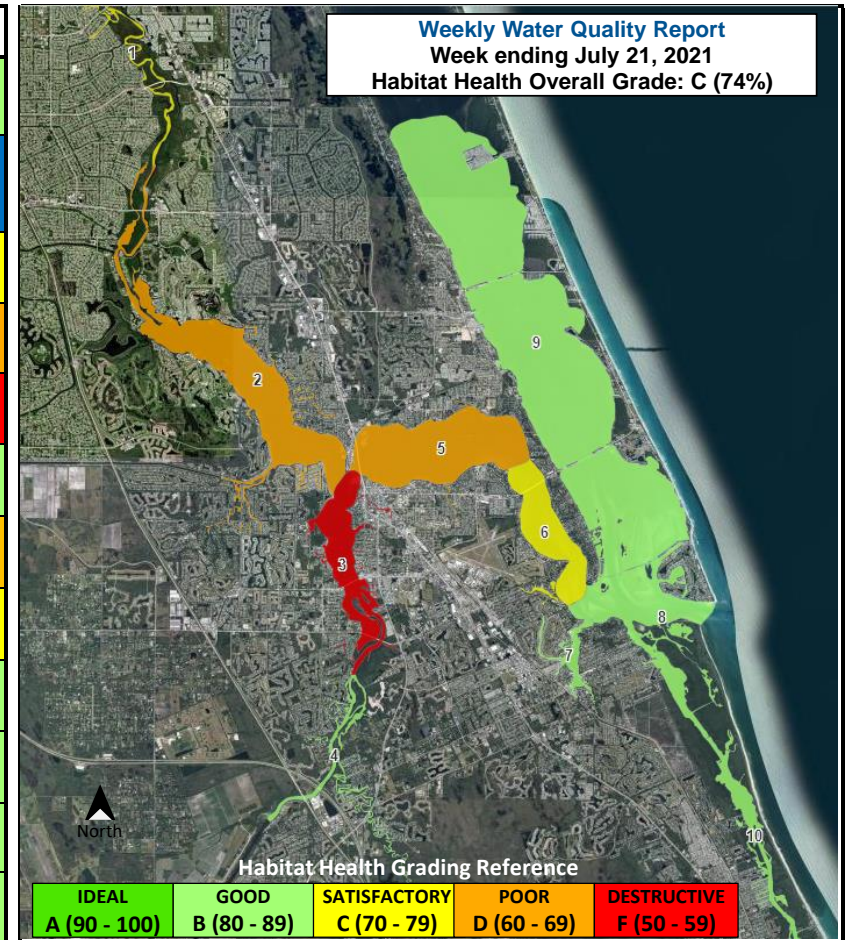
Data on water quality to assess habitat health in the St. Lucie Estuary and southern Indian River Lagoon is collected and provided by the Florida Oceanographic Society's Water Quality Understanding Estuary System Trends (WaterQUEST) program. For more information, past reports, or to support our water quality monitoring, visit [www.floridaocean.org/water-quality](http://www.floridaocean.org/water-quality)



**WATERQUEST**  
WATER QUALITY UNDERSTANDING ESTUARY SYSTEM TRENDS  
FLORIDA OCEANOGRAPHIC SOCIETY

Reporting Week: 15 July 2021 to 21 July 2021

HABITAT HEALTH OVERALL GRADE		SCORE <b>74%</b>		GRADE <b>C</b>		STATUS <b>SATISFACTORY</b>		
Zone	Location	# of Reports	Water Temp. (°C)	pH	Secchi Visibility (m)	Salinity (ppt)	Dissolved Oxygen (mg/L)	Score Grade Status
1	Winding North Fork	3	29	7.6	0.6 Fair	2 Fair	4.4 Fair	<b>71%</b> C Satisfactory
2	North Fork	2	27	7.9	0.8 Fair	3 Poor	4.6 Fair	<b>61%</b> D Poor
3	South Fork	5	30	7.9	0.4 Poor	6 Poor	4.7 Fair	<b>51%</b> F Destructive
4	Winding South Fork	1	31	8.0	0.6 Fair	2 Good	4.4 Fair	<b>81%</b> B Good
5	Wide Middle River	4	30	7.9	0.5 Fair	12 Poor	4.4 Fair	<b>61%</b> D Poor
6	Narrow Middle River	1	31	7.8	1.6 Good	13 Poor	6.4 Good	<b>77%</b> C Satisfactory
7	Manatee Pocket	2	33	8.1	0.9 Fair	29 Good	6.1 Good	<b>87%</b> B Good
8	Inlet Area	3	29	8.4	1.1 Good	27 Fair	5.8 Good	<b>87%</b> B Good
9	Indian River Lagoon	4	28	8.0	0.7 Fair	32 Good	4.7 Fair	<b>81%</b> B Good
10	Intracoastal Waterway South	1	32	7.8	0.9 Fair	35 Good	3.6 Fair	<b>81%</b> B Good



**Salinity**  
Measured in parts per thousand (ppt)

Zone	Poor	Fair	Good
1 & 4	< 1 or > 15	1 - 2 or 8 - 15	2 - 8
2 & 3	< 10	10 - 15 or > 25	15 - 25
5	< 15	15 - 20	> 20
6	< 20	20 - 25	> 25
7	< 20	20 - 27.5	> 27.5
8, 9, & 10	< 25	25 - 30	> 30

Disclaimer: The data above indicates changes in water quality parameters to evaluate habitat health. This map is not to be used to indicate current bacteria levels, nutrient levels, or the presence of harmful algae blooms. For up to date information on bacteria levels, visit the Florida Health Beaches Program (<http://www.floridahealth.gov/environmental-health/beach-water-quality/>). For up to date information on nutrients levels, visit ORCA Kilroy (<http://api.kilroydata.org/public/>) or HBOI LOBO (<http://fau.loboviz.com/>). For up to date information about algae blooms, visit the Florida DEP's algae bloom dashboard (<https://floridadep.gov/algabloom/>).