

# Weekly Water Quality Report

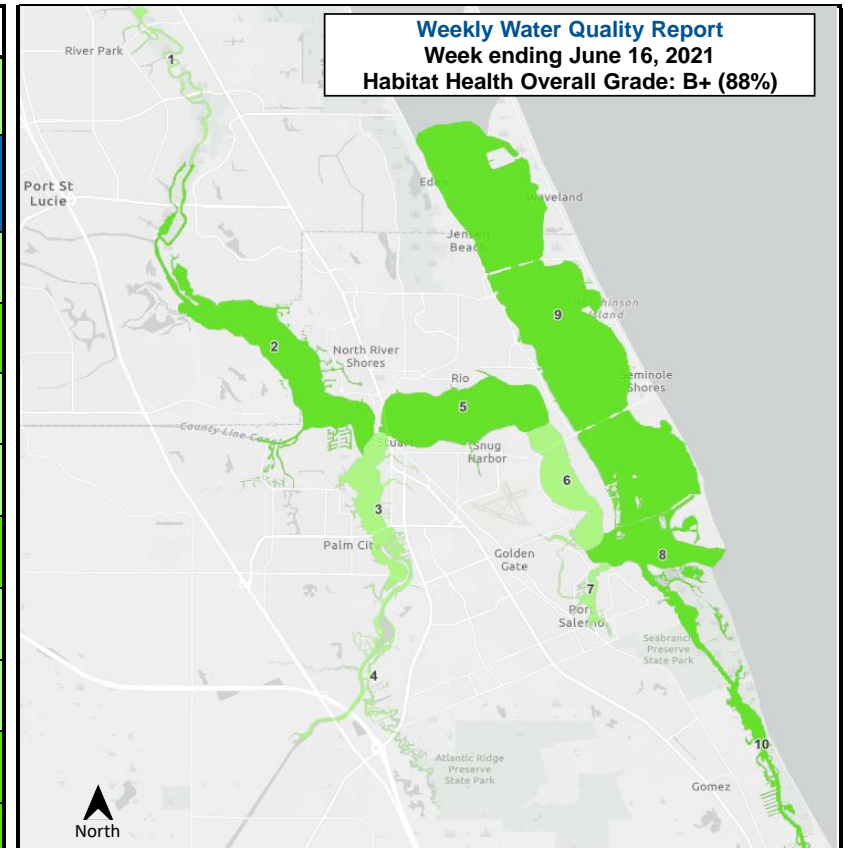
Data on water quality to assess habitat health in the St. Lucie Estuary and southern Indian River Lagoon is collected and provided by the Florida Oceanographic Society's Water Quality Understanding Estuary System Trends (WaterQUEST) program. For more information, past reports, or to support our water quality monitoring, visit [www.floridaocean.org/water-quality](http://www.floridaocean.org/water-quality).



**WATERQUEST**  
WATER QUALITY UNDERSTANDING ESTUARY SYSTEM TRENDS  
FLORIDA OCEANOGRAPHIC SOCIETY

Reporting Week: 10-June 2021 to 16-June-2021

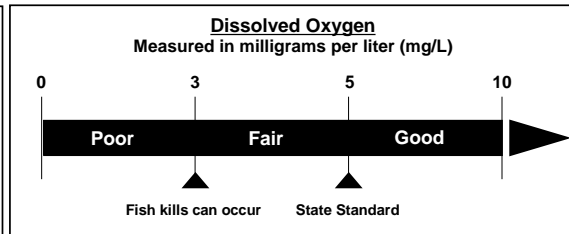
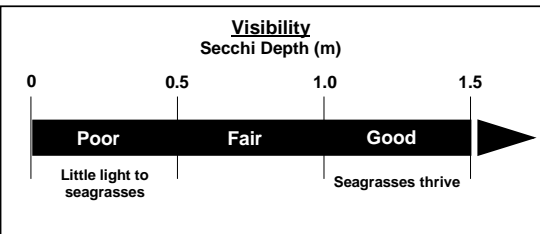
HABITAT HEALTH OVERALL GRADE		SCORE <b>88%</b>		GRADE <b>B+</b>		STATUS <b>GOOD</b>		
Zone	Location	# of Reports	Water Temp. (°C)	pH	Secchi Visibility (m)	Salinity (ppt)	Dissolved Oxygen (mg/L)	Score Grade Status
1	Winding North Fork	3	27	7.6	0.8 Fair	7 Good	5.4 Good	<b>87%</b> B Good
2	North Fork	1	30	8.2	1.1 Good	18 Good	5.5 Good	<b>97%</b> A Ideal
3	South Fork	2	28	8.1	0.5 Fair	19 Good	4.2 Fair	<b>81%</b> B Good
4	Winding South Fork	2	31	7.8	0.6 Fair	7 Good	4.7 Fair	<b>81%</b> B Good
5	Wide Middle River	4	29	8.1	2.5 Good	26 Good	4.6 Fair	<b>92%</b> A Ideal
6	Narrow Middle River	1	31	8.3	0.7 Fair	30 Good	6.7 Good	<b>87%</b> B Good
7	Manatee Pocket	3	30	7.9	0.6 Fair	33 Good	4.7 Fair	<b>81%</b> B Good
8	Inlet Area	2	28	8.3	1.6 Good	36 Good	4.9 Fair	<b>92%</b> A Ideal
9	Indian River Lagoon	6	27	8.1	1.2 Good	34 Good	4.9 Fair	<b>92%</b> A Ideal
10	Intracoastal Waterway South	3	28	7.9	1.2 Good	34 Good	3.9 Fair	<b>92%</b> A Ideal



Weekly Water Quality Report  
Week ending June 16, 2021  
Habitat Health Overall Grade: B+ (88%)

Habitat Health Grading Reference

<b>IDEAL</b> A (90 - 100)	<b>GOOD</b> B (80 - 89)	<b>SATISFACTORY</b> C (70 - 79)	<b>POOR</b> D (60 - 69)	<b>DESTRUCTIVE</b> F (50 - 59)
------------------------------	----------------------------	------------------------------------	----------------------------	-----------------------------------



Zone	Salinity Measured in parts per thousand (ppt)		
	Poor	Fair	Good
1 & 4	< 1 or > 15	1 - 2 or 8 - 15	2 - 8
2 & 3	< 10	10 - 15 or > 25	15 - 25
5	< 15	15 - 20	> 20
6	< 20	20 - 25	> 25
7	< 20	20 - 27.5	> 27.5
8, 9, & 10	< 25	25 - 30	> 30

Disclaimer: The data above indicates changes in water quality parameters to evaluate habitat health. This map is not to be used to indicate current bacteria levels, nutrient levels, or the presence of harmful algae blooms. For up to date information on bacteria levels, visit the Florida Health Beaches Program (<http://www.floridahealth.gov/environmental-health/beach-water-quality/>). For up to date information on nutrients levels, visit ORCA Kilroy (<http://api.kilroydata.org/public/>) or HBOI LOBO (<http://fau.loboviz.com/>). For up to date information about algae blooms, visit the Florida DEP's algae bloom dashboard (<https://floridadep.gov/algabloom/>).