

Florida Oceanographic Society Weekly Water Quality Report

Data on water quality to assess habitat health in the St. Lucie Estuary and southern Indian River Lagoon is collected and provided by the Florida Oceanographic Society's Water Quality Understanding Estuary System Trends (WaterQUEST) program. For more information, past reports or to support our water quality monitoring visit www.floridaocean.org/water-quality

Reporting Week 1/14/2021 to 1/20/2021

Posted: 1/21/2021

Habitat Health
Overall Grade:

83%

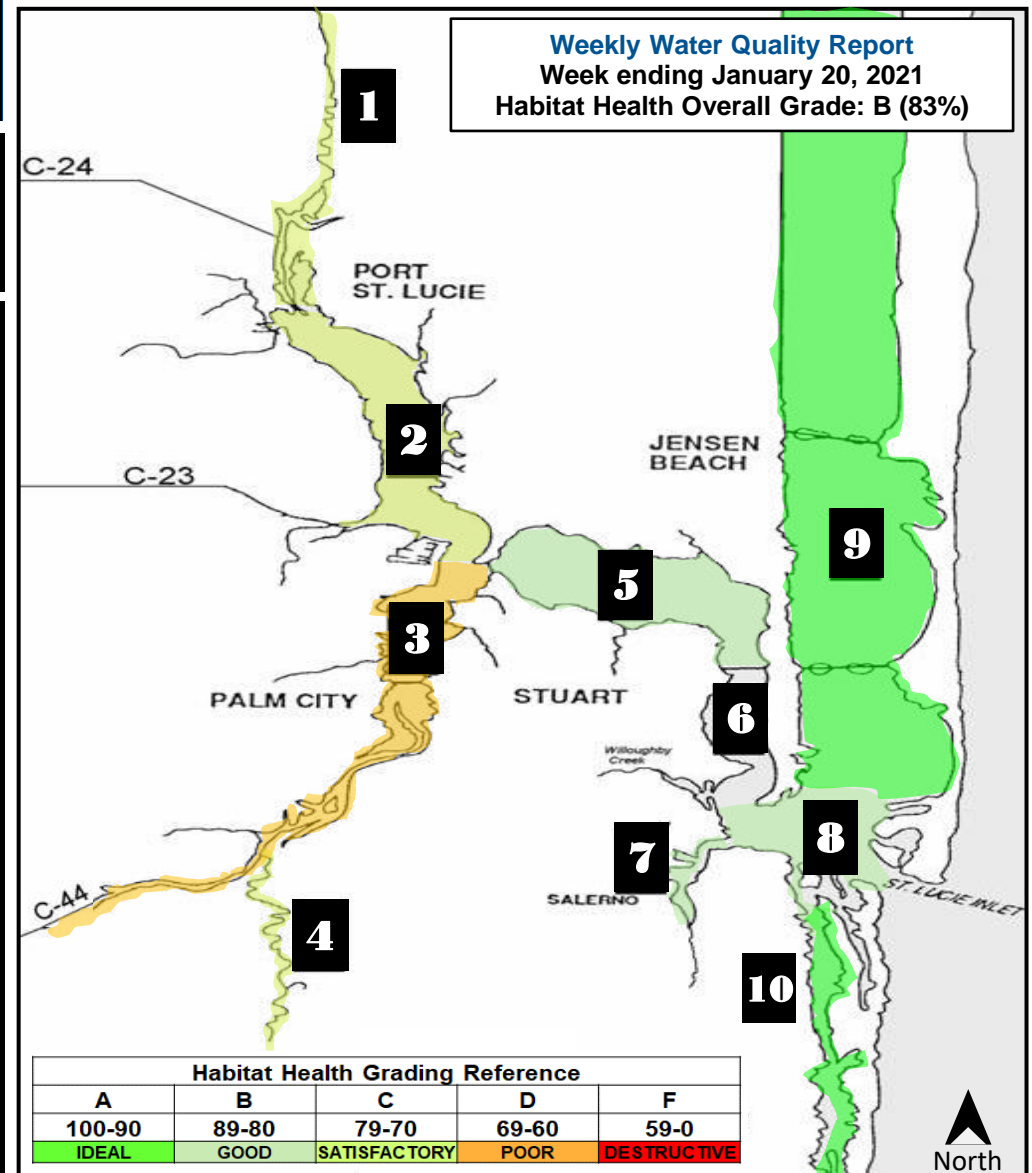
B

GOOD

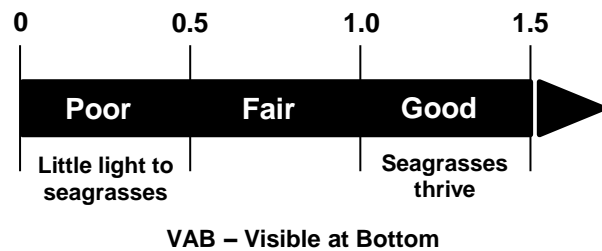
Zone	Location	# of Reports	Water Temp. (°F)	pH	Visibility (Secchi) Meters	Salinity (ppt)	Dissolved Oxygen (mg/L)	Score	Grade
1	Winding North Fork	1	64	7.7	0.9 Fair	15 Fair	6.8 Good	76% Satisfactory	C
2	North Fork	2	60	8.3	0.8 Fair	14 Fair	8.5 Good	76% Satisfactory	C
3	South Fork	5	62	8.2	0.7 Fair	10 Poor	8.6 Good	66% Poor	D
4	Winding South Fork	2	64	7.7	0.6 Fair	1 Fair	6.0 Good	76% Satisfactory	C
5	Wide Middle River	4	64	8.1	4.3 Good	20 Fair	7.2 Good	87% Good	B
6	Narrow Middle River	0			Data	Not	Available		
7	Manatee Pocket	2	74	8.0	1.1 Good	26 Fair	7.9 Good	87% Good	B
8	Inlet Area	2	69	8.3	0.8 Fair	32 Good	6.6 Good	87% Good	B
9	Indian River Lagoon	3	64	8.1	1.5 Good	34 Good	7.1 Good	97% Ideal	A
10	Intracoastal Waterway South	1	72	7.8	1.1 Good	34 Good	5.1 Good	97% Ideal	A



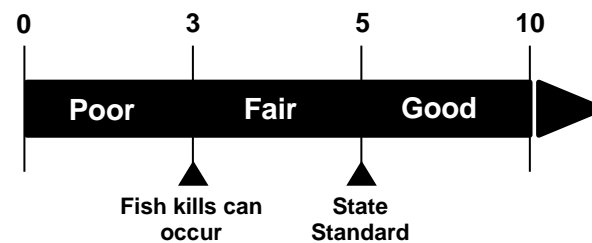
WaterQUEST
WATER QUALITY UNDERSTANDING ESTUARY SYSTEM TRENDS
FLORIDA OCEANOGRAPHIC SOCIETY



Visibility Secchi Depth (m)



Dissolved Oxygen Measured in milligrams per liter (mg/L)



Salinity Measured in parts per thousand (ppt)

Zone	Poor	Fair	Good
1 & 4	< 1 or > 15	1 - 2 or 8 - 15	2 - 8
2 & 3	< 10	10 - 15 or > 25	15 - 25
5	< 15	15 - 20	> 20
6	< 20	20 - 25	> 25
7	< 20	20 - 27.5	> 27.5
8, 9, & 10	< 25	25 - 30	> 30

Disclaimer: The data above indicates changes in water quality parameters to evaluate habitat health. This map is not to be used to indicate current bacteria levels, nutrient levels, or the presence of harmful algae blooms. For up to date information on bacteria levels, visit the Florida Health Beaches Program (<http://www.floridahealth.gov/environmental-health/beach-water-quality/>). For up to date information on nutrients levels, visit ORCA Kilroy (<http://api.kilroydata.org/public/>) or HBOI LOBO (<http://fau.loboviz.com/>). For up to date information about algae blooms, visit the Florida DEP's algae bloom dashboard (<https://floridadep.gov/algabloom/>).