

Manatee Facts

West Indian Manatee

Trichechus manatus

Length: 12 plus feet

Weight: over 3,500 pounds

Color: gray to gray-brown

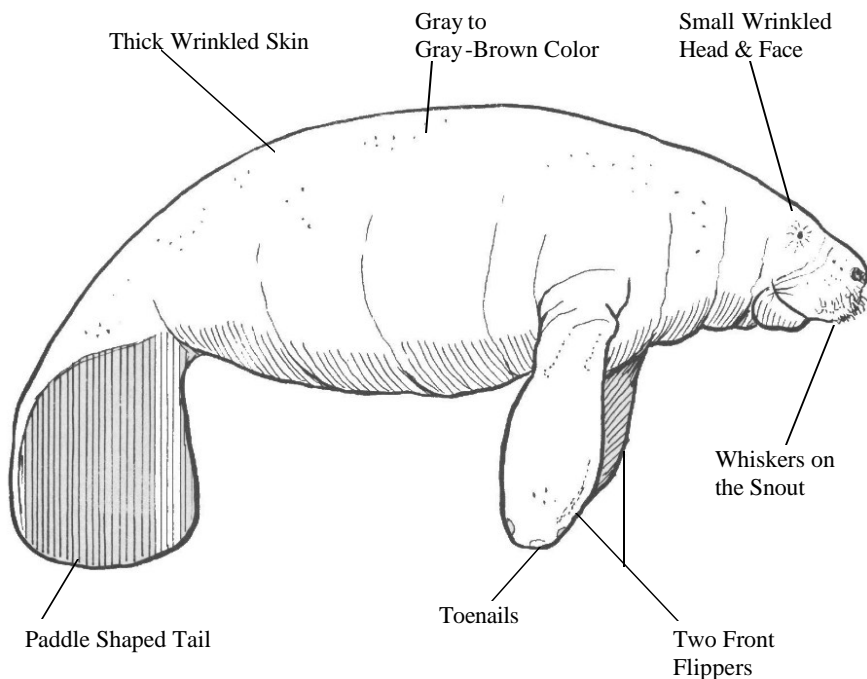
Food: 100 pounds of aquatic plants a day

Reproduction: One calf every 2 to 5 years

Range in US: North Carolina to Texas, mainly Florida

Location: Rivers, canals, estuaries, saltwater bays, & occasionally the open ocean

- ◆ Manatees only have molars to grind their food.
- ◆ Manatees chew two times per second.
- ◆ Manatee teeth are constantly being replaced as they wear down and fall out.
- ◆ The intestine of an adult manatee can measure 130 feet long.
- ◆ Manatees only breath through their nostrils.
- ◆ Manatee can hold their breath for up to 24 minutes.
- ◆ Manatee lungs are 2/3 the length of its body.
- ◆ A manatee cannot turn its head sideways, it must turn its whole body.
- ◆ It takes 13 months for a manatee to be born.
- ◆ Calves spend two years with their mothers learning the migration routes.



Manatees are Mammals

Manatees breath air and have hair like all other mammals. They look like a relative of dolphins and whales but manatees are closer related to elephants.

Little Mermaid?

When the Spanish Explorers reached Florida they thought the Manatees were mermaids.



890 NE Ocean Boulevard
Stuart, Florida 34996
(772) 225-0505
www.fosusa.org

Name: _____

Manatee Math

1) Manatees eat for up to **8** hours a day. They eat up to **100** pounds of aquatic plants a day. How many pounds of plants do they eat an hour?

2) Manatees chew **2** times per second. They eat for **8** hours a day. How many times do manatees chew a day?

3) A manatees heart beats at **60** times per minute. A humans heart beats at **80** times per minute. How many minutes must pass for a manatee's heart to beat the same number of times as the human's heart beats in **12** minutes?

4) Manatees rest for up to **12** hours a day. While resting they breathe once every **5** minutes. How many times does the manatee breathe while resting?

5) The Indian River Lagoon is **156** miles long. The manatee swims at **4** MPH. How many days will it take a manatee to swim the length of the Lagoon?

In The Lexicon

Prehensile - Adapted for seizing or holding, especially by by wrapping around an object.

Manatees lips are **prehensile**. They grab and tear their food with their lips.

Gestation - Pregnancy. The period of carrying developing offspring between conception and birth.

The **gestation** period of the manatee is about 13 months.
Then the calf spends two years in the mother's protection.



Florida

Oceanographic

Coastal Center

890 NE Ocean Boulevard
Stuart, Florida 34996
(772) 225-0505
www.fosusa.org

Name: _____

Manatee Math

1) Manatees eat for up to **8** hours a day. They eat up to **100** pounds of aquatic plants a day. How many pounds of plants do they eat an hour?

Pounds of food / hours a day
 $100/8 =$
12.5 pounds of food per hour

Key

2) Manatees chew **2** times per second. They eat for **8** hours a day. How many times do manatees chew a day?

2 chews per second X 60 seconds X 60 minutes X 8 hours per day = Chews per day
 $2 \times 60 = 120$ $120 \times 60 = 7200$
 $7200 \times 8 =$ **57,600 chews per day**

3) A manatees heart beats at **60** times per minute. A humans heart beats at **80** times per minute. How many minutes must pass for a manatee's heart to beat the same number of times as the human's heart beats in **12** minutes?

Humans beats/min X Time = Manatee beats/min X Time
 $80 \times 12 = 60x$
 $960 = 60x$
 $x = 960 / 60$
x = 16 minutes

4) Manatees rest for up to **12** hours a day. While resting they breathe once every **5** minutes. How many times does the manatee breathe while resting?

12 hours X 60 minutes/hour = 720 minutes
 $720 \text{ minutes} / 5 = 144$
144 times in 12 hours

5) The Indian River Lagoon is **156** miles long. The manatee swims at **4** MPH. How many days of constant swimming would it take a manatee to swim the length of the Lagoon?

$156 \text{ miles} / 4 \text{ MPH} = 39 \text{ hours}$
 $39 \text{ hours} / 24 \text{ hours/day} =$ **1.625 days** or
 $39 \text{ hours} - 24 \text{ hours} = 15 \text{ hours}$ so **1 day 15 hours**

In The Lexicon

Prehensile - Adapted for seizing or holding, especially by wrapping around an object.

Manatees lips are **prehensile**. They grab and tear their food with their lips.

Gestation - Pregnancy. The period of carrying developing offspring between conception and birth.

The **gestation** period of the manatee is about 13 months.
Then the calf spends two years in the mother's protection.