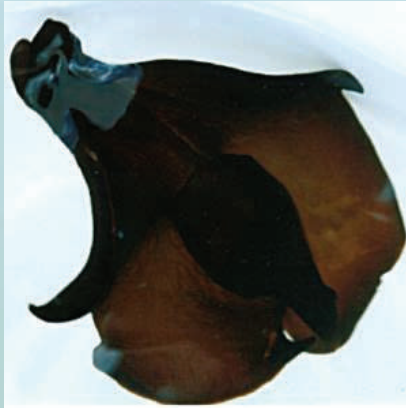




ATLANTIC BLACK SEAHARE

Aplysia morio

This time of year beachgoers may see the Atlantic black seahare out in the surf or washed ashore. Please help return them to the water if they exhibit signs of life.



Classification: Marine gastropod mollusks related to snails, but lacking a shell

Description: Dark brown to black in color, with possible darker lines/stripes on head and sides. Mantle flaps, that look like wings, can spread widely for swimming. Two tentacles located on the mouth and a pair of rhinophores on the head.

Size: Up to 15 inches (40cm) long

Habitat: Shallow intertidal areas abundant in algae but low in wave activity

Range: Known from Bermuda and the eastern USA from Rhode Island to Florida and Texas

Diet: Algae

Did you know?

- *Aplysia* secrete a toxic purple ink for defense and waste removal.
- Commonly used in medical research, due to a well understood neural circuit.
- Due to a poor grasping ability, strong storms can cause the habitats to stir up and wash the seahares ashore.