

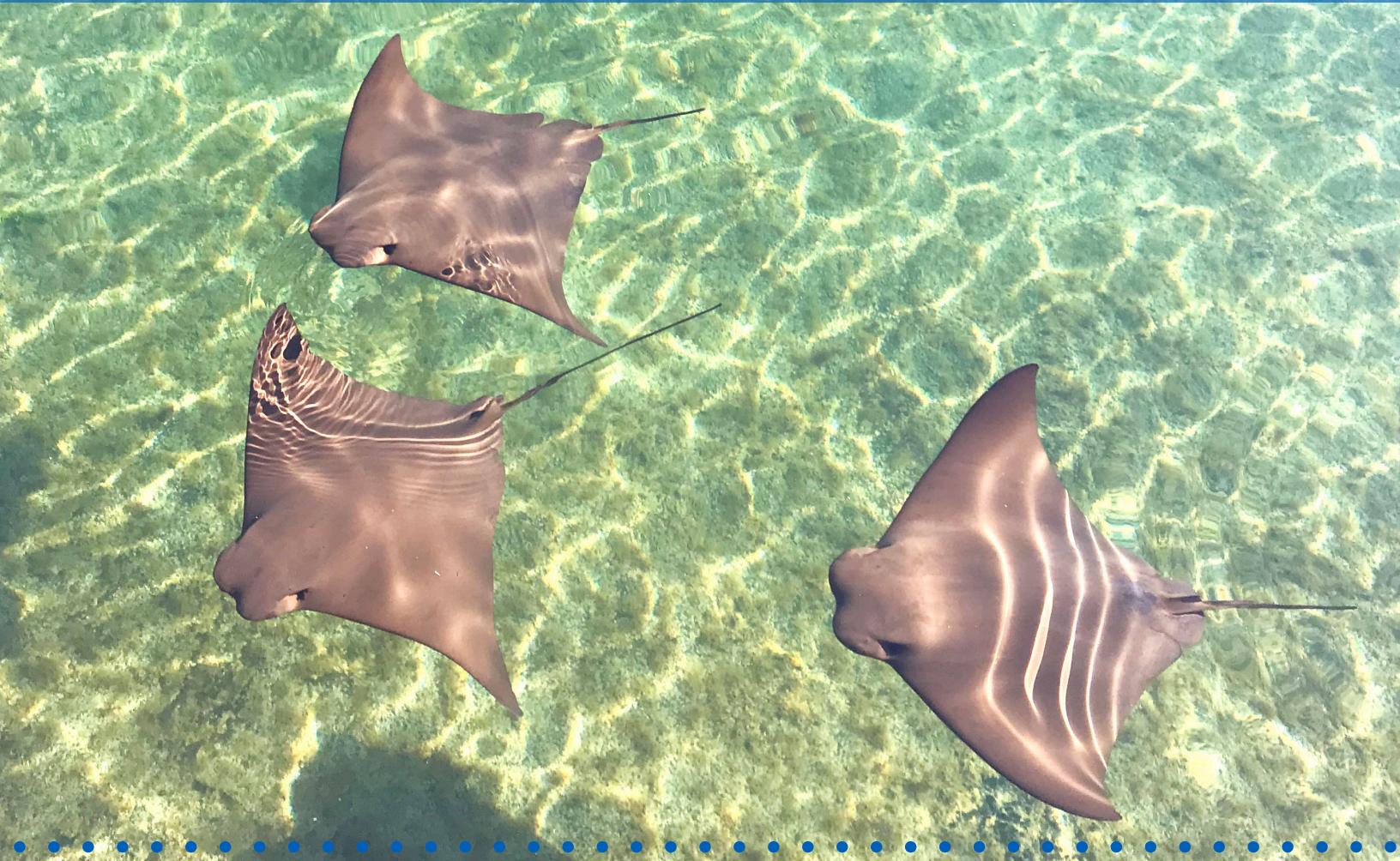


Florida  
Oceanographic  
Society

# ***2020 IMPACT REPORT***

# OUR MISSION:

TO INSPIRE ENVIRONMENTAL STEWARDSHIP OF FLORIDA'S COASTAL ECOSYSTEMS THROUGH EDUCATION, RESEARCH AND ADVOCACY.



## TABLE OF CONTENTS

|                                |    |
|--------------------------------|----|
| Introduction.....              | 1  |
| Capital Expansion Updates..... | 2  |
| Shell Party.....               | 3  |
| Coastal Center.....            | 4  |
| Animal Care.....               | 5  |
| Education.....                 | 6  |
| Research & Conservation.....   | 8  |
| Advocacy.....                  | 10 |
| Volunteers.....                | 12 |
| Community Outreach.....        | 13 |
| Major Gifts and Donors.....    | 14 |
| Operating Performance.....     | 20 |
| Board and Staff Directory..... | 21 |

Photography:

Florida Oceanographic Society



**Florida  
Oceanographic  
Society**

890 NE Ocean Boulevard, Stuart, FL 34996  
(772) 225-0505 | FloridaOcean.org



# 2020: NAVIGATING CHANGE

Although 2020 started with great promise, the global pandemic had major direct impacts on Florida Oceanographic. We were forced to close the Coastal Center to the public in March, and even though we carefully reopened in June with social distancing and capacity limitations, visitors have been slow to return. Despite these challenges, Florida Oceanographic has remained focused on our mission and still achieved several significant milestones during this unpredictable year.

The construction of our new Ocean EcoCenter began in September of 2019 and marked the kick-off of our expansion plans for the Coastal Center on Hutchinson Island. We are rapidly nearing completion of this exciting project and expect staff to be settled in place by the end of the year. The Grand Opening will be scheduled for early Spring when the Exhibit Galleries are anticipated to be complete. We continued to care for an expanding array of wonderful marine life at the Coastal Center while also helping Florida Fish and Wildlife with Sea Turtle strandings. We were still able to fulfill demand and run our popular Summer Camps and Sea Turtle Walks and also experienced the largest attendance to the Coastal Lecture Series in our history.

With the support of our dedicated cadre of volunteers, our Research and Conservation efforts advanced with the building of 12 new oyster reef habitats and further expansion of our Seagrass Nursery to 50 seawater tanks, a key component to restoring seagrass in the Indian River Lagoon. We also continued our Advocacy initiatives by presenting our concerns and conservation message at meetings of the Water Management District and U.S. Army Corps of Engineers, while calling for them to stop the pollution of Florida's waters and destruction of estuarine habitats. These agencies and State and Federal political leaders are the primary focus of our efforts to make changes to improve our waters.

Our wonderful donors and supporters and our good fortune in being able to secure support early on from grant programs have helped us get through this most difficult time. We are all looking forward to 2021 as a time to recover from the impacts of COVID-19 and celebrate new beginnings. With the opening of the Ocean EcoCenter, a culmination of many years of consideration, planning and development, our new building will be the foundation of a sea change in our ability to achieve our mission.

**ALLEN HERSKOWITZ**  
**BOARD CHAIR**



**MARK D. PERRY**  
**EXECUTIVE DIRECTOR**



# CAPITAL EXPANSION UPDATES



## GRAND OPENING IN SPRING OF 2021

Construction of the new Ocean EcoCenter is nearing completion! We are so thankful for our generous donors and the community support that has made this project a reality. For more information about the expansion and ways you can contribute, please contact our Development Office at 772-225-0505 x108.



## OCEAN ECOCENTER FEATURES:

- 5 Exhibit Galleries
- 30 Exhibit Elements
- Staff Offices and Executive Board Room
- Ocean Exploration Lab, a Science and Education Classroom
- 3rd Floor Ocean Deck for private events

## CAPITAL CAMPAIGN NEXT STEPS:

**GIFT SHOP EXPANSION  
LAGOON BRIDGES  
WATERWORKS EXPLORATION ZONE**

***NAMING OPPORTUNITIES AVAILABLE***

# SHELL PARTY

## JACK & BARBARA NICKLAUS HOST A CELEBRATION!

Florida Oceanographic Honorary Trustee Jack Nicklaus and his wife, Barbara, hosted a Shell Party celebration at the Coastal Center in February 2020. Guests had the opportunity to tour construction of the Ocean EcoCenter and support the progress of the Capital Campaign. The Shell Party marked the completion of the "shell" of the building, which will be home to numerous exhibit galleries, an Ocean Exploration Lab, staff offices, and a third floor Ocean Deck.

*Kopf Family*



*Nancy Perry, Barbara Nicklaus, Mark Perry*



*Tour of the Ocean EcoCenter*



*Jack Nicklaus views construction progress*



*Donors and guests enjoying the party*



# AT THE COASTAL CENTER

**WE CARE FOR MORE  
THAN 300 ANIMALS  
EVERY DAY INCLUDING:**

- 3 Green Sea Turtles
- 1 Loggerhead Sea Turtle
- 10 Nurse Sharks
- 20 Stingrays
- Over 200 bony fish & 80 invertebrates

## A TREASURE COAST DESTINATION

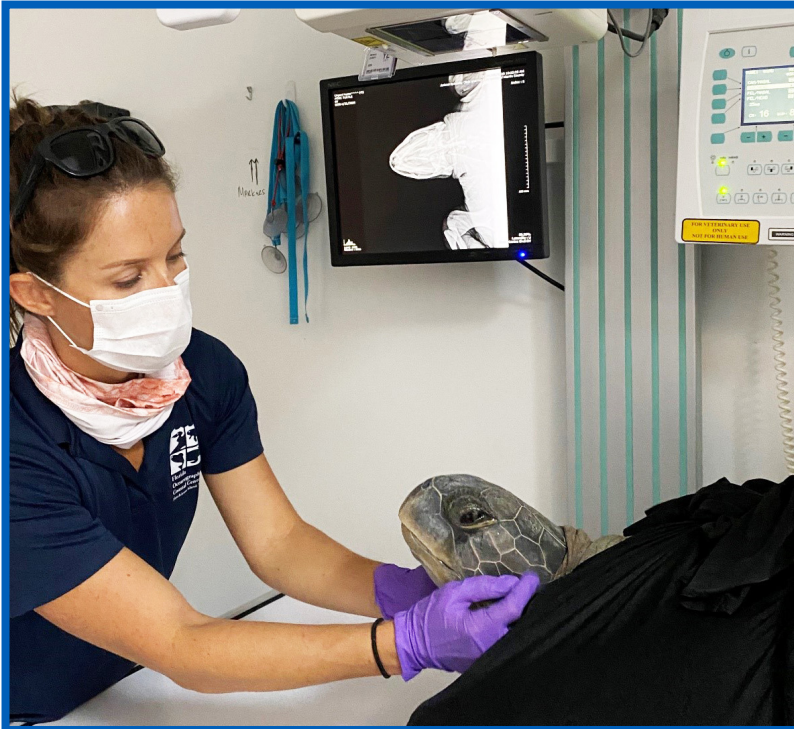
Florida Oceanographic Society's 57-acre Coastal Center on Hutchinson Island gives visitors of all ages the opportunity to learn more about Florida's coastal ecosystems while experiencing local marine life up-close. Stingrays, nurse sharks, gamefish and 4 non-releasable sea turtles can all be found in the 750,000 Gamefish Lagoon. Visitors can explore indoor and outdoor aquariums and exhibits, walk the nature trail down to the Indian River Lagoon, and interact with stingrays and invertebrates in the touch tanks. Daily educational programs inspire environmental stewardship by teaching guests about fish and sea turtles species, the troubles facing these animals and their habitats and how we can each do our part to protect them!

## FISH CAM

Although the Coastal Center closed to the public in mid-March, staff still provided daily care for our onsite animals while patiently awaiting the day we could welcome visitors back on property. In a conversation with a supporter, the idea of a live streaming camera came to mind as a way for people to experience our conservation ambassador animals remotely! With help from this special donor, we are happy to share that the footage is now live on our website, utilizing the same company that hosts the local beach cameras.

Using a smartphone, hover over the icon on the right with your camera application and the webpage will open. Or go to [www.floridaocean.org/fish-cam](http://www.floridaocean.org/fish-cam) for a view of the Gamefish Lagoon and the residents that call it home.





## EXAMS DURING A PANDEMIC

Housing non-releasable sea turtles requires commitment to their long-term health. One way we ensure this is through internal exams utilizing x-rays and ultrasounds. This process is a bit more hands-on than with a person, and the social distancing and safety precautions created even more challenges than usual! Thankfully, our veterinarian and her team were professional and accommodating in working with Turtwig and the exam went off without a hitch. We were optimistic that our required face masks would provide protection from turtle gas, but we're sorry to report, they did not. So Turtwig had the last laugh in the end and returned to the Gamefish Lagoon with a clean bill of health.

## HELPING HANDS

Florida Oceanographic's Animal Care team is part of the Sea Turtle Stranding and Salvage Network through the Florida Fish and Wildlife Conservation Commission (FWCC). One of the main ways we support this program is serving as a designated drop-off location for struggling sea turtle hatchlings. Strong surf, pollution, disorientation, and other impacts can cause sea turtle hatchlings to become stranded on the beach in the midday heat. Concerned citizens are asked to call the FWCC hotline and, if needed, they are directed to bring the hatchling to a designated drop-off location. This year we received 80 wiggly hatchlings, of which over 98% were able to be released back to the ocean within a day or two. Most of the time hatchlings are found not moving or appearing weak. This lack of movement is a tactic to prevent the attention of predators and is not actually a sign of injury or illness. As soon as the sun goes down, their instincts kick in, they "wake up," and the journey to the ocean resumes. Most times, it is best to leave hatchlings alone, but we are always happy to help the ones that need it most.



# EDUCATION

Florida Oceanographic Society has a 56-year history of educating our community about marine science, conservation, and important environmental issues. We believe that education is a critical tool in the fight for clean water and a healthy environment. Our Education Department has taught hundreds of thousands of children and adults from the Treasure Coast and beyond about the natural world around them. Although COVID-19 presented some unique challenges for our Education team this year, it didn't stop us from spreading our educational message!

## MARINE SCIENCE SUMMER CAMP

This year, summer camp at the Coastal Center had more meaning than ever before. In addition to providing children with hands-on opportunities to develop a life-long passion for nature, our camps allowed youngsters to get out of the house and interact with their peers for the first time in months. Although COVID-19 created some very real obstacles, our summer camp staff worked with parents and campers to ensure a safe and fun learning environment.



## SEA TURTLE NESTING WALKS

With some careful modifications to ensure guest and staff safety, we were able to continue our popular sea turtle walk program in 2020. This unique educational offering, operated under a permit from the state of Florida, gives participants an opportunity to safely witness a mother sea turtle nesting on a local beach. For the first time, we offered single-family sea turtle walks for guests who wanted to enjoy a more intimate experience. In addition to nighttime sea turtle nesting walks, we teamed up with Ecological Associates, Inc. to stream live sea turtle nest excavation programs to viewers around the globe.



## COASTAL LECTURE SERIES

The 2020 Coastal Lecture Series shattered our all-time attendance record, attracting 1,745 guests to eight world-class lectures – the largest audience in the history of the series. The continued growth of this series underscores our coastal community’s passion about science and the environment. Through the support of the Marmot Foundation, we were able to attract two internationally recognized speakers this year; oceanographer and author Dr. Ellen Prager, and sea level rise expert John Englander.

## OUTREACH EDUCATION

In addition to six daily educational presentations at the Coastal Center, we used a diverse range of in-person and virtual outreach programs to inspire guests to make the environment a priority. This year, we streamed live lessons and educational webinars into school classrooms, university lecture halls, and homes around the globe. Before COVID-19 impacted our programming, we held presentations at schools, libraries, hotels, community group meetings, and public festivals, including the Indian River Lagoon Science Festival, NatureFest, and Rally for the River.

## DESERVING KIDS TO THE COAST

Supporting the educational needs of less fortunate children in our community is one of our key priorities. The grant-funded “Deserving Kids to the Coast” marine science education program provides free field trips to the Coastal Center for students who would otherwise be unable to experience these opportunities. Although COVID-19 reduced the reach of this year’s program, we were still able to provide free educational field trips to the entire 3rd grade at White City Elementary and Lakewood Park Elementary, both local Title I schools, as well as children served by Operation 300 and the Hibiscus Children’s Center. “Deserving Kids to the Coast” is made possible through the generous support of the William & Helen Thomas Charitable Trust, the Roy A. Hunt Foundation, and the Andrew & Robin Hunt Philanthropic Fund at The Community Foundation Martin - St. Lucie.



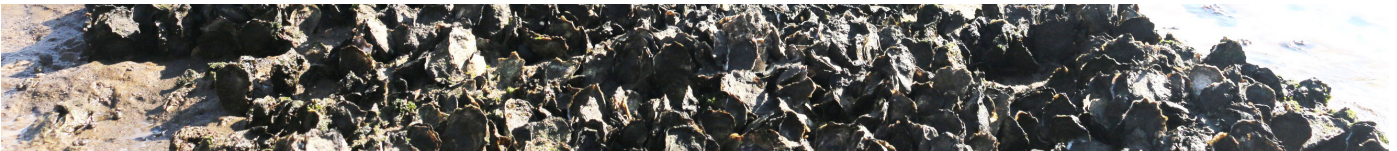
# RESEARCH & CONSERVATION

We completed our new Research Lab in February and are officially moved in! This new 600 sq. ft. building is critical to carrying out our mission of restoration and research, and will allow us to stage program materials, process samples and host other researchers. With the enhanced capabilities of the new lab building, we were able to expand our summer internship program for college and graduate students to work closely with our scientists on mini research projects. The students gain experience in collaboration, experimental design, data collection, and dissemination of results, while providing the department with critical data necessary to complete research projects. We see the updated internship structure to be both beneficial to the students' career goals and the department's objectives.

## FLOOR- FLORIDA OCEANOGRAPHIC OYSTER RESTORATION



- Works to restore and research critical oyster reef habitat in the St. Lucie Estuary (SLE) and southern Indian River Lagoon (IRL)
- Involves the community in direct, hands-on efforts
- Collects oyster shell from **15** partner restaurants, including **32,280** pounds collected this year and built into **12** reefs
- Continues monthly monitoring at **6** restored reefs to provide a better understanding of oyster health within the estuary
- Monitors stabilization of sediment landward of living shorelines



## FOSTER – FLORIDA OCEANOGRAPHIC SEAGRASS TRAINING EDUCATION & RESTORATION

- Restores seagrass habitat by educating and engaging the local community through a citizen science-based seagrass research and restoration program
- Utilizes volunteers to help collect stranded seagrass fragments from local shorelines and grow them in our on-site nursery
- Provides a vital, non-destructive seagrass source for restoration
- Cultivates seagrass population in expanded seagrass nursery with **fifty 100+** gallon seawater tanks!
- Maintains active restoration efforts with over **623** sq. ft. of seagrass planted into the IRL this year



## LIVING SHORELINES

Living shorelines improve coastal resiliency and provide an alternative to traditional hardened stabilization methods by incorporating elements like oyster reefs, seagrasses, mangroves, and salt marsh plants. As part of a pilot program to improve local living shoreline restoration methods, our team of scientists and volunteers deployed two living shorelines this year, encompassing 190 linear feet of shoreline that included oyster reefs and salt marsh. This pilot project will allow us to develop a proof-of-concept and create a streamlined process for homeowners interested in installing a living shoreline on their property.

## WATERQUEST

Our water quality program, WaterQUEST, has been monitoring the health of our local waterways since 1998, providing valuable data to local and regional environmental managers and scientists. We currently monitor 32 sites across 10 zones that encompass the SLE and the southern IRL. Our volunteer citizen scientists test for weekly changes in salinity, temperature, water clarity, oxygen, and pH to assess estuary health. To date, this program has involved more than 123 volunteers who have collectively submitted over 17,198 data sets!

### COLLABORATIONS & PARTNERSHIPS

Science is a collaborative effort and our scientists have partnered with multiple academic, government and non-profit organizations. Our scientists have also contributed to the scientific community through the dissemination of their research in international, national, regional, and state-level, peer-reviewed publications and presentations.

#### COLLABORATIONS INCLUDE

Indian River Lagoon National Estuary Program  
CERP RECOVER Science Coordination Group | Marine Discovery Center  
Indian River Lagoon Aquatic Preserves | UF/IFAS  
Marine Resources Council | Martin County Public Works  
Oyster Integrated Mapping and Monitoring Program | Florida Sea Grant  
Smithsonian Environmental Research Center  
South Florida Water Management District | Smithsonian Marine Station  
St. Johns River Water Management District | Ducks Unlimited  
United States Geological Service

#### ACADEMIC PARTNERS

Clark Advanced Learning Center | Florida Gulf Coast University  
Indian River State College | Martin County High School  
University of Central Florida | University of Florida | Texas A&M  
Villanova University | Whitney Lab for Marine Biosciences  
Roosevelt University | University of Alabama | Samford University





## TAKING THE MESSAGE TO THE COMMUNITY

We work together as members of the Everglades Coalition and Rivers Coalition, lead conversations at stakeholder meetings and educate our community leaders on the critical water issues. Our voices are needed in the call to stop the pollution and destruction of Florida's waterways and environment. We must speak out individually and collectively with a clear message advocating for our waters in all conversations, at all public meetings and in all interactions with local leaders.

### OUR INVOLVEMENT INCLUDES:

- Attending **42** local, state and federal agency meetings and workshops on watershed protection plans, Everglades restoration and a multitude of other water issues
- Leading teams for **62** meetings with state political leaders during *Everglades Action Day* in Tallahassee, FL
- Representing current water issues as an expert panelist at the Stuart Water Forum
- Participating in a panel for the "*America's Amazon, The Study of the St. Lucie River*" screening event
- Hosting the annual Rally for the River to bring community awareness of issues facing our waterways
- Making scientific presentations at the Indian River Lagoon Symposium
- Chairing monthly Rivers Coalition meetings with expert programs and discussions of regional water issues among the **105** member organizations

## ENVIRONMENTAL POLICY UPDATES

Governor DeSantis visited the Coastal Center in November of 2019 to sign legislation to enable more water quality enforcement in the Florida Department of Environmental Protection. He also opened the gate to initiate operation of the C-44 Stormwater Treatment Area, which will provide much needed storage and treatment of water in this part of the watershed. Congress successfully passed a Water Resource Development Act for 2020, and efforts were made to get more water legislation from the Florida Legislature. We participated in formulating water policy in the St. Lucie Estuary and Lake Okeechobee watersheds during ongoing meetings about achieving pollution reduction goals and setting water level schedules for the Lake.

The lakes, rivers, creeks, streams, estuaries, lagoons and surrounding coastal ocean waters are all part of Florida's connection to our environment. We depend on the health of these aquatic ecosystems, and we must continue to advocate to keep them clean, free from pollution and healthy so that they provide the resources we need to sustain our lives, economy and our future.



## BEING A VOICE FOR OUR ENVIRONMENT

The 35th Annual Everglades Coalition Conference took place this year in Captiva, Florida, with over 400 participants attending five plenary and nine breakout sessions to discuss the progress and recent efforts for restoring America's Everglades. Serving as Co-Chair, Florida Oceanographic's Executive Director, Mark Perry, helped to organize the Conference and moderated several discussions including the plenary on Lake Okeechobee Water Management. Attended by the South Florida Water Management District, U.S. Army Corps of Engineers, U.S. Department of Interior and a broad group of federal, state and local agency and political leaders, the Coalition Conference brings together stakeholders to combine the efforts of our diverse Everglades community.

# VOLUNTEERS

## AN INSPIRATION TO US ALL!

We are proud that volunteers are engaged in nearly every aspect of Florida Oceanographic Society. These smiling, caring individuals can be spotted taking on a wide variety of opportunities - from educating guests at our Coastal Center to testing the local waters, and from scouting for nesting sea turtles to cleaning up our local roadways and beaches. This past year we were blessed with volunteer activity every week, even with COVID-19. While our Coastal Center was closed to the public, we were fortunate to have some of our water quality monitoring volunteers still able to test from their own personal sites. During our closure we were given the opportunity to learn more about our volunteers as we stayed in touch through Zoom get-togethers, educational webinars with our staff and partner organizations, phone calls, emails and even snail mail. As we have reopened our doors to the public, and are able to safely hold volunteer events, we have no doubt that our volunteers will continue to carry out our mission of inspiring others into 2021!



**DURING THE 2020 FISCAL YEAR, OUR 180 ACTIVE VOLUNTEERS DONATED OVER 7,500 HOURS.**

We are grateful to each and every one of them for every minute they donate to help support our mission!

## ACTIONS GO BEYOND WORDS

- **1,900 hours** of testing and reporting by 39 water quality monitors
- **240 hours** of walking beaches and helping with programs by 14 sea turtle scouts
- **250 hours** donated by 100 volunteers cleaning beaches, waterways and roads
- Exhibit guides spent **3,200 hours** educating and inspiring guests at our Coastal Center
- Green Team gardeners and maintenance volunteers spent over **700 hours** on our gardens and grounds
- **120 hours** of care and dedication donated by Animal Care interns
- **100 hours** spent on weather station upkeep and reporting
- **600 hours** accumulated by volunteers engaged in our oyster and seagrass restoration efforts
- Countless hours throughout the year from our Board Of Directors
- Committee Volunteers worked magic as they reimagined events and fundraisers



# COMMUNITY OUTREACH



Our community outreach kicked off with a screening of John Nelson's documentary *"America's Amazon: The Story of the St. Lucie River"* at The Lyric Theatre. Proceeds from the sold-out event benefitted Florida Oceanographic and allowed Mark Perry to advocate for our waterways in his role as a panelist.

We also hosted a booth at Nature Fest in Fort Pierce, allowing us to expand our reach in St. Lucie County. As shutdowns began, Florida Oceanographic continued our community outreach by going virtual! From Zoom presentations on Earth Day to increased engagement on social media platforms, we've been able to share our conservation messaging even when we can't physically be out in the community.

Oceans Alive, our annual gala, was originally scheduled for March but transformed into a 4-day online auction in June. The continued support of local businesses, sponsors and donors made this new format possible and enabled the event to have an even larger audience!



# DONORS

## MAJOR DONORS (AS OF SEPT. 30, 2020)

### \$1,000,000 +

The Kopf Family  
Frances Langford Foundation

### \$500,000 +

Thomas A. Evinrude & Family  
Andrew & Robin Hunt  
Philanthropic Fund at The  
Community Foundation  
Martin - St. Lucie  
Martin County Tourism Capital  
Project Grant  
Mr. & Mrs. Francis Roach  
Shirley Family Foundation  
Clayton & Anna May Timmons  
Barbara Briggs Trimble  
Karl & Sheila Wickstrom Family

### \$200,000 +

Jim & Mary Jo Askew  
The Bauman Family Foundation  
Victoria Brown & Ed Botwinick  
Jim & Diney Burke  
Community Foundation for  
Palm Beach and Martin Counties  
Anonymous  
Carolyn Donigan & Deane  
MacMillan  
Melissa W. Escobar  
Carole & William Hauke, Jr.  
Jock & Twinks Irvine  
Anonymous  
Charles E. Knopf Jr.  
Andrea Lutz  
Marmot Foundation  
Robert & Suzanne Pearson  
The Sontheimer Foundation  
Bob & Carol Weissman  
Sam Zemsky

### \$100,000 +

Thomas Buhr  
The Everglades Foundation  
Tom & Amy Grimmer  
Gustave & Rita Hauser Foundation  
Jane & Bob King  
Carolyn & Herbert Metzger  
Foundation  
John & Janey Pratt  
Rich & Yvonne Ross  
Paul A. & Tasha Shirley  
Susan R. & John W. Sullivan  
Foundation  
William and Helen Thomas  
Charitable Trust  
Gail & Lois Warden

### \$50,000 +

Bruce & Ann Bedford  
Dan & Janet Chabot  
Bob & Karen Croce  
Larry & Diana Cusick  
Richard & Karen Dakers  
John & Lore Dodge  
Bob & Ellen Drisner  
Lee & Gaby Elsey  
Rip & Noreen Fisher  
Florida Power & Light Company  
Free Family Foundation  
Paul G. Gemeinhardt  
Marital Trust  
Robert & Mary Graves  
John & Barbara Grimmer  
Anonymous  
The Houghland Family Foundation  
Rob & Molly Lehman  
H.W. & Patricia Lichtenberger  
Natalie J. MacDonald  
MAH Foundation  
The Montgomery Foundation

Martha G. Moore Foundation  
Curtis & Edith Munson  
Foundation  
Kevin Peterson  
John Pierson  
Louise Potter  
Douglas & Carol Rearick  
Mildred & Frank Savastano  
Tom & Linda Schaefer  
Judy Viny  
Larry & Jan Wzorek



### \$25,000 +

John & Joan Amerling  
Bill & Lolly Anderson  
William & Cecilia Anspach  
The Howard Bayne Fund  
Gretchen & Robert Bent  
George & Anna Bergalis  
The Berger Family Foundation  
Patricia A. Borg  
Peggy & Kevin Bousquette  
Frank M. Byers Jr.  
Carib Sea, Betsey Moore  
Anonymous  
Comerica Bank  
Coquina Cove Luxury  
Apartments  
Ann & Sam Colin  
Jean Schafer-Cox  
Tom Duff  
Maria & Daniel Dunn



The Elizabeth Ordway Dunn Foundation  
 David & Cheryl East  
 The Ted & Lorraine Glasrud Family Foundation  
 Carole & John Gregory  
 Dana & Pete Grimmer  
 Bob & Corinne Healey  
 Paul & Verna Hederman  
 The Henry Foundation  
 Allen & Susan Herskowitz  
 David & Yancey Hillegas  
 Marjorie Hohman  
 Linda & Tom Houston  
 Dale & Mary Hudson  
 Hutchinson Island Marriott Beach Resort  
 Wayne & Marti Huizenga  
 Impact 100 Martin  
 Jacobs Family Foundation  
 Kantner Foundation  
 Kiplinger Foundation, Knight Kiplinger  
 Paul & Helen Kleinfeld  
 Anonymous  
 Gordon & Anita Lamb through the Jefferson Family Charitable Foundation

Legatus Foundation  
 Marylin & Arthur Levitt  
 Peg Lindberg  
 Bob & Ralf Massey  
 Bob & Susan Mathias  
 Tom & Leslie McCrudden  
 Charles S. McIntyre III  
 The Morgridge Family Foundation  
 New England Fish Market  
 James & Kathryn Nichol  
 Frank & Patricia Noonan  
 Northern Trust, NA  
 Arthur & Augusta O'Hara  
 Patricia Oldford  
 Ann L. & James F. Orr III  
 Alden & Jane Peck  
 Perkins Charitable Foundation, Leigh Perkins  
 Nils & Susan Peterson  
 Bonnie Pitman



Premier Party Rentals  
 Nancy & Michael Rand  
 Nathaniel P. & Alita Reed  
 Suzanne & Thomas Reynolds, Jr.  
 Robertson Family Fund  
 Rotary Club of Stuart, Sunrise  
 Allan & Anne Salvatori  
 Seacoast National Bank  
 Sharkey Family Foundation  
 John & Joyce Slavsky  
 Ken & Ilene Stern  
 Steven & Daryl Swann  
 Susan Sullivan  
 The John A. & Elizabeth F. Taylor Charitable Foundation  
 John & Dot Whitarcar  
 Cindy & Jim Ziemba  
 Pat Zygmun



## OCEAN LEGACY SOCIETY

*Members of the Ocean Legacy Society have notified Florida Oceanographic that we have been included in their legacy giving and estate plans. The Ocean Legacy Society supports the long-term health and sustainability of Florida Oceanographic.*

Don & Jessica Armstrong  
 Mary Jo & Jim Askew  
 Margaret Bradley  
 Larry Cusick  
 Arthur & Doris Schneyman Fund  
 Harry & Helyn Brubeck Fund, a gift of Kay & John Ziegler  
 Dwyer Family Fund  
 The Charles & Audrey Faust Foundation  
 Carole & William Hauke, Jr. Fund  
 Paul & Verna Hederman

Andrew & Robin Hunt  
 Margaret B. Hurlburt Charitable Remainder Trust  
 Twinks Irvine  
 Arthur G. Jager  
 Clifton & Margaret Perry Fund  
 Bob & Ralf Massey  
 Robert & Sally McKeague  
 Robert & Suzanne Pearson Fund  
 Rich & Yvonne Ross  
 Paul A. Shirley Family  
 The Shirley Family Foundation, Edward & Patricia Shirley

Steven & Daryl Swann  
 Mr. & Mrs. George H. Swift, III, Fund  
 Davies & Gayle Tainter  
 Briggs-Trimble Family Charitable Fund of the Community Foundation for Palm Beach & Martin Counties  
 Jean A. Walsh  
 Bob & Carol Weissman  
 Karl Wickstrom Estate

## **ANNUAL DONORS (OCT. 1, 2019 THROUGH SEPT. 30, 2020)**

### **\$25,000 +**

Carolyn Donigan &  
Deane MacMillan  
Charles E. Knopf, Jr.  
Rob & Molly Lehman  
Martha G. Moore Foundation

### **\$10,000 +**

Beryl Anthony  
Mary Jo Askew  
Peggy & Kevin Bousquette  
Bob & Karen Croce  
Larry Cusick  
Anonymous  
The Everglades Foundation  
The Hagen Family Foundation  
Nancy Halliwell  
Linda & Tom Houston  
Andrew & Robin Hunt  
Philanthropic Fund at The  
Community Foundation  
Martin - St. Lucie  
Roy A. Hunt Foundation  
Indian River Lagoon Council  
The Kopf Family  
Marylin & Arthur Levitt  
H.W. & Patricia Lichtenberger  
MAH Foundation  
Marmot Foundation  
Bob & Susan Mathias  
Mr. & Mrs. David & Arleen  
McGlade Foundation  
Curtis & Edith Munson  
Foundation  
Frank & Patricia Noonan  
South Florida Water  
Management District  
William and Helen Thomas  
Charitable Trust  
VoLo Foundation  
Larry & Jan Wzorek

### **\$5,000 +**

John & Joan Amerling  
William & Cecilia Anspach  
The Berger Family Foundation  
Bob & Jan Crandall  
Richard & Karen Dakers  
Maria & Daniel Dunn  
Florida Power & Light Company  
James & Audrey Gillis  
Paul & Anafior Graham  
Barbara Grimmer  
Tom & Amy Grimmer  
The Houghland Family Foundation  
Twinks Irvine  
Kalos Agathos Foundation  
Bob & Jane King  
Gordon & Anita Lamb through  
the Jefferson Family  
Charitable Foundation  
Andrea Lutz  
James & Kathryn Nichol  
Robert & Suzanne Pearson  
Kathy & Bill Purington  
Nancy & Michael Rand  
Douglas & Carol Rearick  
Riverview Cosmetic &  
Restorative Dentistry  
Sharkey Family Foundation  
Ken & Ilene Stern  
Ross & Barbara Strickland  
Clare & Molly Tyler  
Robert & Carol Weissman  
Wilmington Trust

### **\$1,000 +**

Drs. Jerold & Susan Aronson  
John & Kathryn Adamiak  
Kathy & Lawrence Ashe  
Atlas Restaurant Group  
W. David Woolford &  
Joan P. Bahl  
Marcie Balow  
George & Donna Barr  
Sally Batz & Henley Sandidge  
Legatus Foundation



Gretchen & Robert Bent  
George & Anna Bergalis  
Frederick & Judy Blount  
Patricia A. Borg  
Briggs-Trimble Family  
Charitable Fund  
Larry & Sally Brodie  
Nicole Broquet  
F. Ted Brown Jr.  
Victoria Brown & Ed Botwinick  
Thomas Buhr  
Elise & Tim Burns  
Jane & Robert Burton  
Doug & Bobette Campbell  
William & Martha Campbell  
Drs. William Carlson &  
Carroll Brennan  
Frank & Dee Cermak  
Theresa L. Chafel  
Norman & Monever Chambers  
Sue & Steve Chase  
John & Darlene Chuplis  
Dan & Diane Clapp  
John & Dorathea Coblentz  
Jennifer Collins  
Conchy Joe's Seafood Restaurant  
Timothy & Maureen Cotter  
William & Audrey Crandall  
Crary Buchanan, PA  
Kathy & Thomas Cullen  
Gail & Donald Curtis  
Joan & Barrie Damson  
Michael & Nancy Del Priore  
Kathleen DeMont  
Doug & Jane Ditmars  
Michael Donigan  
John & Sue Drastal  
Bob & Ellen Drisner  
Bernadette & Per Ellingsen



Tom O. Evinrude  
 Elizabeth Fedele  
 Ferreira Construction  
 Rip & Noreen Fisher  
 Kathleen & Brent Freihofer  
 Wayne & Debra Freihofer  
 Beth & Lee Gaines  
 Michael & Linda Gambardella  
 Brian & Mary Geary  
 Joan & Richard Gibbons  
 Barry & Merle Ginsburg  
 Anonymous  
 Stephanie Gray, Berkshire  
 Hathaway Florida Realty  
 Harbour Ridge Yacht &  
 Country Club  
 Paul & Verna Hederman  
 Allen & Susan Herskowitz  
 David & Yancey Hillegas  
 Marjorie Hohman  
 Hooks Construction  
 Hutchinson Island Marriott  
 Beach Resort  
 Charles Ike  
 Ellen & David Jackson  
 Jacobs Family Foundation  
 Steve & Cathy Johnson  
 Bud & Marjorie Jordan  
 Jupiter Christian School  
 John & Luann Justak  
 John & Kallie Jurgens  
 Thomas & Peggy Kane  
 John & Julie Kime  
 Shannon & Nicholas King  
 Gwen Knapp  
 Julie-Anne Kress  
 George & Carol Labadie  
 Patrick Lehmann &  
 Suzanne Schluter  
 Hank & Ellen Libby  
 Lilly Pulitzer  
 Antonio & Electra Limbardo  
 Carolyn & Charlie LoCastro  
 Dennis & Linda Longstreet  
 John & Marilyn Love



Dr. & Mrs. Frank &  
 Peggy Marsico  
 Bob & Ralf Massey  
 Edwin R. Massey, Ph.D.  
 Louise & K.C. McAlpin  
 Brian & Alison McMahon  
 Richard & Jean Meduski  
 John & Carolyn Mellaci  
 Henry E. Minchew  
 Betsey Moore, CaribSea  
 Karen Neal  
 New England Wholesale  
 Fish & Lobster  
 Jack & Barbara Nicklaus  
 Northern Trust  
 The Ocean Foundation  
 Lorraine O'Hara & Doug Lapierre  
 Jeff Order & Joyce Klein  
 Ann L. & James F. Orr III  
 Mary Lou Owen  
 Kenneth & Janet Ozier  
 Anonymous  
 Betty Paterson  
 Robert & Suzanne Pearson  
 Mark & Nancy Perry  
 Bonnie Pitman  
 Rich & Angie Pontynen  
 Proud Pour  
 Thelma A. Powell  
 Diane & Jim Quinn  
 William & Ann Marie Rachwal  
 Wendy Randall  
 Rehmann  
 Douglas & Gail Ricci  
 Bill & Marti Rodamaker  
 Rich & Yvonne Ross  
 Charlie & Gerry Ruibal  
 Stuart & Michele Sabol  
 Allan & Anne Salvatori

Mildred & Frank Savastano  
 Tom & Linda Schaefer  
 Judith & Walter Schwab  
 Scripps Howard Foundation  
 Sea Turtle Grants Program  
 Sherri & Geoff Seiber  
 Janet & Charles Seidler  
 Rex & Susan Sentell  
 Paul & Mimi Simon  
 Jane Sinatra-DuPont  
 Michelle James &  
 Freeman Smith  
 Magge & Wick Sollers  
 Nelson & Sandra Stefany  
 Stevenson Family Fund at  
 The Community Foundation  
 Martin - St. Lucie  
 Stephen Strout  
 Steven & Daryl Swann  
 Holly & Paul Swanson  
 Davies & Gayle Tainter  
 Margaret & Joseph G. Temple, Jr.  
 Jacqui Thurlow-Lippisch &  
 Dr. Ed Lippisch  
 Thurlow & Thurlow, P.A.  
 Peter & Jody Tingus  
 Laura Elsenboss & John Trahan  
 Treasure Coast Sailing Adventures  
 Isa Von Hessert  
 The Howard Bayne Fund  
 Alex & Mary Wade  
 Tom & Peggy Weissenborn  
 Carol Webb & D.K. Wemlinger  
 Stanley & Laura Wiegand  
 Beth & Leonard Wilf  
 John P. Wilson  
 Andy & Rebecca Zager  
 Richard & Nancy Zappala



## **LIFETIME MEMBERS (AS OF SEPT. 30, 2020)**

Nathan Albers  
Richard & Terri Almandi  
Jim & Mary Jo Askew  
Robert Bauman  
Bruce & Ann Bedford  
Sandra & William Bevins  
Margaret Bradley  
Victoria Brown & Ed Botwinick  
Bill & Sue Conner  
Stuart & Barbara Cozzens  
Doug Crompton  
Larry & Diana Cusick  
Charles deGarmo  
John & Lore Dodge  
Carolyn Donigan &  
Deane MacMillan  
Bob & Ellen Drisner  
Mr. and Mrs. Willis H. du Pont  
David & Cheryl East  
Lee & Gaby Elsey  
Melissa W. Escobar  
Thomas A. Evinrude & Family  
Jordan & Jean Fields  
Free Family Foundation  
Barbara & Jerry Gordon  
Robert & Mary Graves

Dave & Vicki Grove  
MAH Foundation,  
Allan Hadhazy  
John & Carolyn Hanson  
Carole & William Hauke, Jr.  
Bob & Corinne Healey  
David & Yancey Hillegas  
Mary Ann Houghland  
Dale & Mary Hudson  
Jock & Twinks Irvine  
Anonymous  
Leslie F. Johnson & Lisa Berry  
Bud & Marjorie Jordan  
Kantner Foundation  
Ulla & Harold Kaplan, Jr.  
Kiplinger Foundation,  
Knight Kiplinger  
Paul & Helen Kleinfeld  
Fred & Betty Kopf  
Arthur & Marilyn Levitt  
Peg Lindberg  
Lindsay Marine, Kevin Lindsay  
Andrea Lutz  
Natalie MacDonald  
Sean & Shannon Mann  
Kent & Judy Mergler  
John Mildenberger &  
Michele Ruth  
Jim & Judith Mitchell  
Curtis & Edith  
Munson Foundation  
Malcolm R. Myers  
John & Joanne Payson  
Robert & Suzanne Pearson

Alden & Jane Peck  
Perkins Charitable Foundation,  
Leigh Perkins  
Nils & Susan Peterson  
John Pierson  
Bonnie Pitman  
Louise Potter  
Thelma A. Powell  
John & Janey Pratt  
Publix Super Market Charities  
Frances Rago  
Douglas & Carol Rearick  
Nathaniel P. & Alita Reed  
Rich & Yvonne Ross  
Paul A. & Tasha Shirley  
Virginia Skuse  
John & Joyce Slavsky  
Geoffrey & Aleta Smith  
Eugene & Gretchen Souther  
John & Susan Sullivan  
Susan Sullivan  
Frank & Edwardine Tasco  
Toll Brothers, Ron Blum  
The Trimble Family  
Hugo & Patti Unruh  
Judy Viny  
Gail & Lois Warden  
Jill & Stan Wattles  
Robert & Carol Weissman  
John & Dot Whiticar  
Bill & Donna Whittaker  
Karl & Sheila Wickstrom Family  
John & Kay Ziegler  
Cindy & Jim Ziemba



## **LIFETIME MEMBERS IN MEMORIAM**

Bob & Liz Ball  
Jim & Diney Burke  
Dan & Janet Chabot  
Eunice H. Drewsen  
Ted & Lorraine Glasrud  
Joseph & Ray Gordon  
Edward Hagerty

Gustave & Rita Hauser  
Wayne & Marti Huizenga  
Marion L. Hutchison  
Arthur G. Jager  
Joseph LoTufo  
George & Nancy Montgomery  
Arthur & Augusta O'Hara  
Jim Oehlberg

Suzanne & Thomas Reynolds, Jr.  
Adele Roach  
Art & Doris Schneyman  
Clayton & Anna May Timmons  
Barbara Briggs Trimble  
Sam Zemsky  
Pat Zygmun

# CAPITAL CAMPAIGN DONORS

## \$1,000,000 +

The Kopf Family

## \$500,000 +

Andrew & Robin Hunt  
Philanthropic Fund at  
The Community Foundation  
Martin - St. Lucie  
Martin County Tourism  
Capital Project Grant

## \$200,000 +

Mary Jo & Jim Askew  
Anonymous  
The Grimmer Family In Loving  
Memory of John E. Grimmer  
Carole Hauke In Memory  
of Bill Hauke, Jr.  
Bill & Andrea Lutz Family  
The Sontheimer Foundation  
In Memory of  
Tim & Anna Timmons  
Bob & Carol Weissman

## \$100,000 +

The Bauman Family  
Foundation  
Victoria Brown & Ed Botwinick  
Thomas Buhr given In Memory  
of Joseph H. Buhr  
Jock & Twinks Irvine  
Jane & Bob King  
Herb & Carolyn Metzger  
Rich & Yvonne Ross

## \$50,000 +

Bruce & Ann Bedford in Honor  
of their daughter  
Julie Bedford Vanderbilt  
Coquina Cove Luxury  
Apartments  
Robert & Ellen Drisner  
Anaflor & Paul Graham  
Rob & Molly Lehman  
Robertson Family Fund  
Jean Schafer-Cox  
In Memory of Stephen  
Howard Schafer

Paul & Tasha Shirley Family  
Susan R. & John W.  
Sullivan Foundation  
Estate of Karl Wickstrom

## \$25,000 +

Bob & Karen Croce  
The Colin Family in Loving  
Memory of James Lewis  
Askew, our "Pap"  
Richard & Karen Dakers  
Robert & Lori Driscoll  
Rip & Noreen Fisher  
The Henry Foundation  
Anonymous  
John & Judy Keller  
Jane & B.D. McIntyre  
Foundation  
Morgridge Family Foundation  
Perry/Pitman Family in  
Memory of Clifton &  
Margaret Perry  
Douglas & Carol Rearick  
Mildred & Frank Savastano  
Tom & Linda Schaefer  
Ken & Ilene Stern  
The Webert Family  
Larry & Jan Wzorek

## \$15,000 +

Carolyn Donigan &  
Deane MacMillan  
Lee Elsey given In Memory  
of Gaby Elsey  
John & Carole Gregory  
Jack & Marge Hohman  
Legatus Foundation

## \$10,000 +

William & Cecilia Anspach  
George & Anna Bergalis  
In Memory of James R. Berger  
The Bousquette Family Fund  
In Memory of Dan Chabot  
Mr. & Mrs. Larry Cusick  
Douglas & Jane Ditmars  
Bryant Donigan  
Richard & Rusty Duffy

Florida Power &  
Light Company  
Robert & Mary Graves  
Paul & Verna Hederman  
Dale & Mary Hudson  
John Justak & Luann Justak  
Hank & Ellen Libby  
Natalie J. MacDonald  
Bob & Susan Mathias  
James & Kathryn Nichol  
Frank & Patricia Noonan  
Barbara & Dave Birdsey,  
The Pegasus Foundation  
John Pratt  
Rich & Angie Pontynen  
Nancy & Michael Rand  
Sharkey Family Foundation  
Rufus & Melynda  
Wakeman Family

## \$5,000 +

Sally Batz & Henley Sandidge  
John & Dot Coblentz  
Jan & Bob Crandall  
Alan & Elizabeth Finegold  
Nina Griswold  
Liz Grossman & Marnell  
McNamara  
Allen & Susan Herskowitz  
David & Yancey Hillegas  
Kelly Family Ciudiú Foundation  
Matthew & Susan King  
Ralf & Bob Massey  
The Janet Prindle Seidler  
Foundation  
Douglass & Patricia Stewart  
Alex & Mary Wade  
Kathleen B. Walgreen given  
In Memory of  
Mr. Charles R. Walgreen III

## \$2,000 +

John & Joan Amerling  
Marcia Balow  
Robert & Gretchen Bent  
Lynne Calderwood  
Gerry & Kathleen DeMont  
James & Audrey Gillis  
Tom & Linda Houston  
Anonymous  
Dan & Cathy Merritt  
Lorraine & Doug O'Hara  
The Susan & Nils Peterson  
Charitable Fund  
Joyce & John Slavsky  
Sandy & Nelson Stefany  
Clare & Molly Tyler  
John & Carol Wagner  
Stanton & Margaret  
Weissenborn  
Patricia Zygmun



## Up to \$2,000

Beverly Anderson  
Mary Astras  
Bruner Family  
Jane & Bob Burton  
Margaret & Evans Crary Jr.  
Mark & Donna Cocorullo  
Jordan & Jean Fields  
Gary & Karen Goforth  
Matthew & Jane Hooks  
John & Kallie Jurgens  
Ed Lippisch &  
Jacqui Thurlow-Lippisch  
Alison & Brian McMahan  
Ann & Jim Orr  
John & Linda Schieffelin  
Darlene Straka  
Davies & Gayle Tainter  
Scott & Kelly Turnbull  
Isa Von Hessert  
In Memory of May Webb



# OPERATING PERFORMANCE

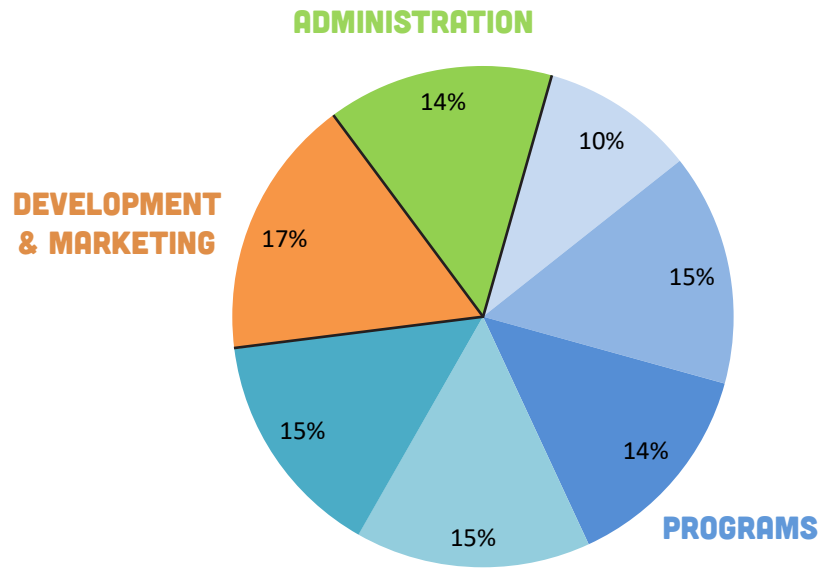
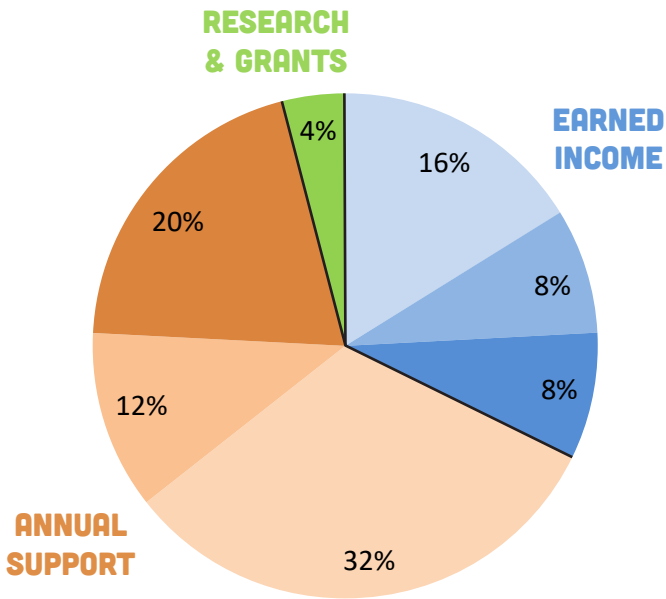
FISCAL YEAR OCT. 2019 – SEPT. 2020 (FROM FINANCIAL STATEMENTS 9/30/20)

## SUPPORT AND REVENUES

|                                        |                    |
|----------------------------------------|--------------------|
| Admissions.....                        | \$240,304          |
| Educational Programs.....              | \$118,895          |
| Gift Shop.....                         | \$119,563          |
| General Contributions.....             | \$478,091          |
| Membership Contributions.....          | \$169,950          |
| Special Events.....                    | \$299,276          |
| Research & Grants.....                 | \$60,101           |
| Operating Reserves & PPP Loan.....     | \$233,948          |
| <b>Total Support and Revenues.....</b> | <b>\$1,720,128</b> |

## EXPENSES

|                                       |                    |
|---------------------------------------|--------------------|
| Visitor Center.....                   | \$170,321          |
| Facilities.....                       | \$257,241          |
| Animal Care & Life Support.....       | \$236,877          |
| Education & Volunteer Department..... | \$261,234          |
| Research & Conservation.....          | \$252,783          |
| Development & Marketing.....          | \$289,760          |
| Administration.....                   | \$251,912          |
| <b>Total Expenses.....</b>            | <b>\$1,720,128</b> |



- Admissions
- Educational Programs
- Gift Shop
- General Contributions
- Membership Contributions
- Special Events
- Research & Grants

- Visitor Center
- Facilities
- Animal Care & Life Support
- Education & Volunteer Department
- Research & Conservation
- Development & Marketing
- Administration

# BOARD & STAFF DIRECTORY

## BOARD OF DIRECTORS

### Board Chair

Allen Herskowitz

### Vice Chair

Bob Mathias

Patricia Noonan (2020)

### Secretary

Nancy Rand

Bob Mathias (2020)

### Treasurer

Matthew King

### Directors

W. John Amerling

Mark Cocorullo

Audrey Gillis (2020)

Gary Goforth, Ph.D., PE

Paul R. Hederman

Matthew Hooks, DMD

Linda Houston

Daniel B. Merritt

Patricia Noonan

W. Scott Turnbull

### Honorary Trustees

Mary Jo Askew

Bob Bauman

Tom A. Evinrude

Dale Hudson

Deane MacMillan

Edwin Massey, Ph.D.

Jack Nicklaus

John Pratt

Paul A. Shirley

## STAFF DIRECTORY

### Administration

Executive Director

Mark D. Perry

Director of Business & Operations

Susan Scheyder

Administrative Assistant

Cathy Muir

### Animal Care & Life Support

Director of Animal Care & Life Support

Brittany Biber

Animal Care Specialist

Chris Britton

Animal Care Specialist

Angelina Bruno

Animal Care Technician

Tanya Hahn

### Development & Marketing

Director of Development & Marketing

Abigail Flood

Community Outreach & Event

Coordinator

Michelle Byriel

Development Assistant

Deanna Thurlow

Graphic Design & Marketing

Coordinator

Anastasia Keating

Volunteer Coordinator

Rosemary Badger

### Board Fundraising Professional

Nancy Perry

### Education

Director of Education & Exhibits

Zack Jud, Ph.D.

Education Specialist

Shannon Dack

Education Specialist

Yasmeen Fadlallah

### Operations

Operations Manager

Shaun Jackson

Operations Technician

Steve Ades

### Research & Conservation

Director of Scientific Research & Conservation

Loraé Simpson, Ph.D.

Research Technician

Samantha Smith

Shell Recycler

Alex Goldin

### Visitor Center

Visitor Services Manager

Susana McHale

Visitor Services Assistant Manager

Jan Kurtz

Visitor Center Associate

Joyce Gherlone

Visitor Center Associate

Gail Neward

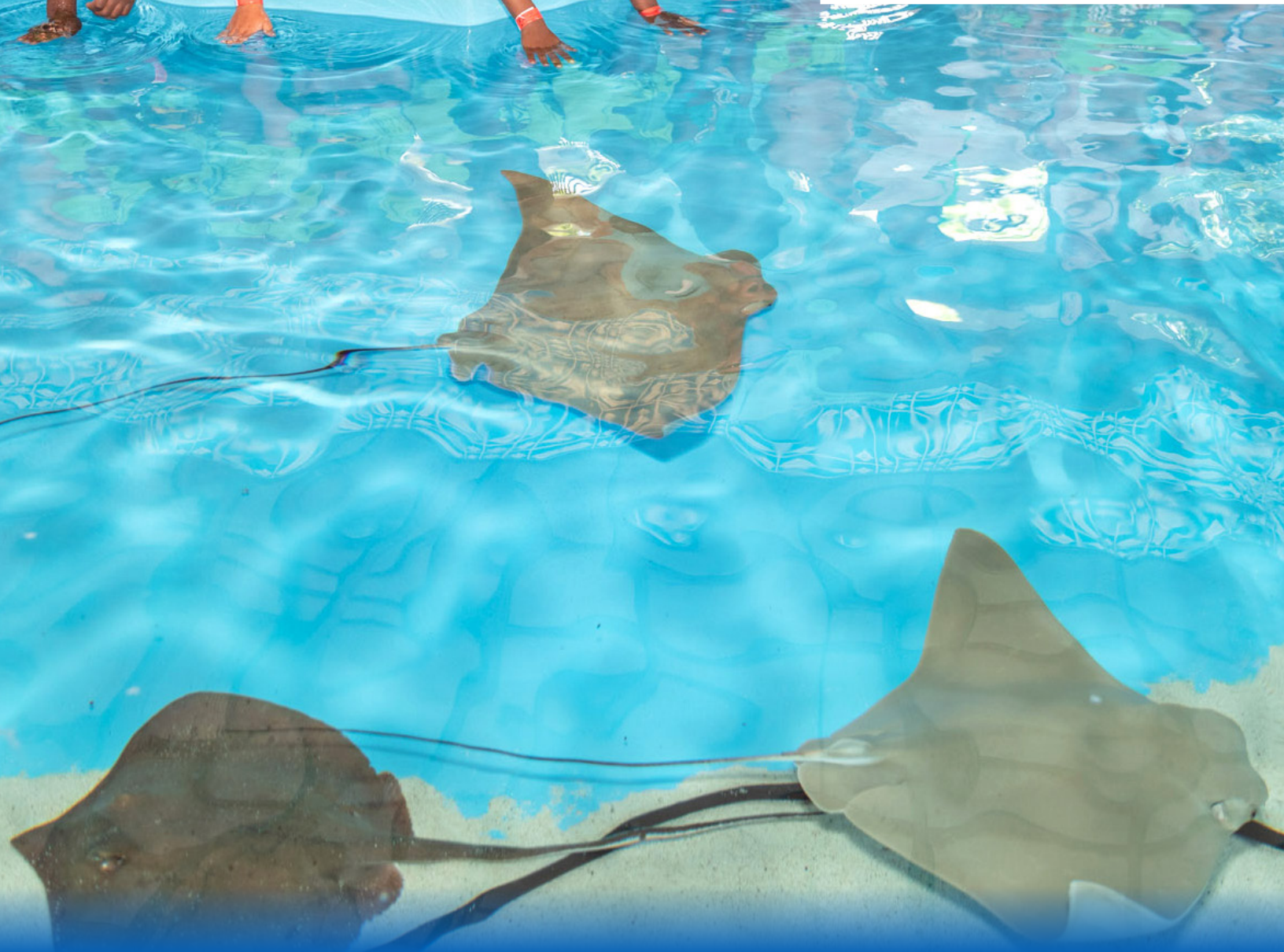
Visitor Center Associate

Sheri Walker





**GET SOCIAL  
WITH US!**



**Florida  
Oceanographic  
Society**

**890 NE Ocean Boulevard, Stuart, FL 34996  
(772) 225-0505 | [FloridaOcean.org](http://FloridaOcean.org)**